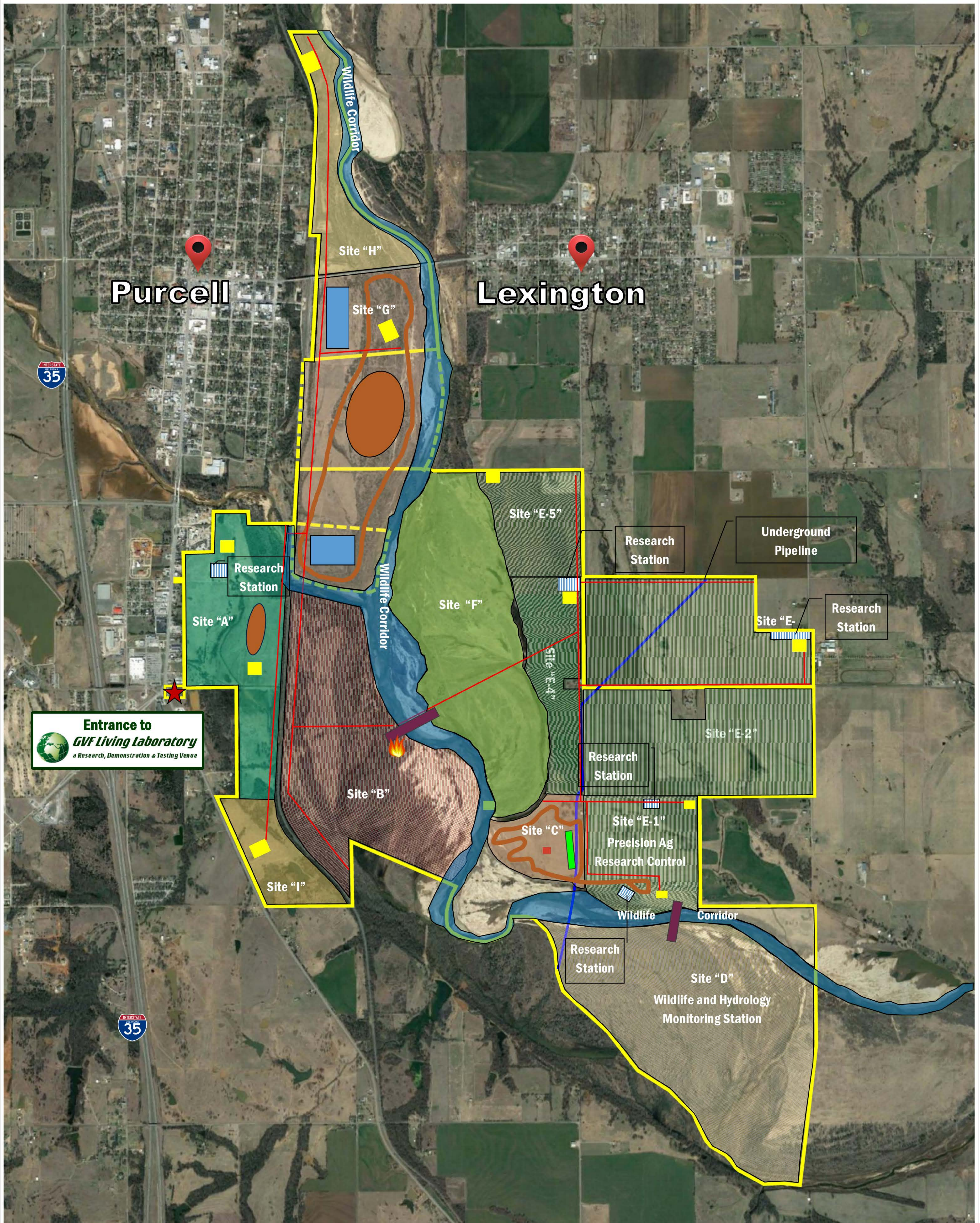




# ***GVF Living Laboratory***

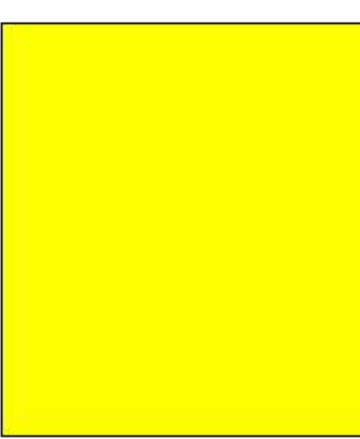
***a 3,500-acre Research, Demonstration & Testing Venue***

## **Preliminary Infrastructure Plan**





## LEGEND


 Research “Pad” sites (antenna, communications, radar, Mesonet, sonic anemometer towers, ceilometer, ADS-B towers, renewable energy and climate sensors, observation/research stations)

 Research Stations

 Ground Test Tracks (Sites “A” “C” “G”)

 Parking and Seating

 Communications Network including Fiber Optics and Power-Over-Ethernet

 Foot and Small Vehicle Bridge, Communication Crossing, Morphodynamic River Flow Rates and River Bathymetry, Morphology and Volumetric Monitoring Stations

 Fire Observation Tower

 10 foot Helipad (OK64 H1)

 800 foot Runway (OK64 17/35)

## RESEARCH SITES

**“A” Autonomous Vehicles, Robotics and Remotely Piloted Aircraft Test Site**

**“B” Weather Science and Atmospheric, Hydrology, Public Safety/Search and Rescue**

**“C” Autonomous Vehicles, Robotics and Remotely Piloted Aircraft Test Site and Endangered Species Observation**

**“D” Native Grass and Vegetation Preserve and Streamflow/Sediment Transport, Radiation Balance/Evapotranspiration, Moisture/Drought and Hydrology Monitoring Stations**

**“E” (1-5) Precision Agriculture Research Paddocks**

**“F” Preserve for Erosion, Streamflow/Sediment Transport, Radiation Balance/Evapotranspiration, Moisture/Drought, Hydrology and Grassland Studies**

**“G” Drone Racing Track and Event Center**

**“H” Native Grass and Vegetation Preserve and Streamflow/Sediment Transport and Hydrology Monitoring Stations**

**“I” Equipment Staging and Storage Wildlife Corridor – Endangered Species Observation, Hydrology Research sites**